

# Uchi Residences

*Uchi Residences* is centrally located in Phnom Penh, but within a peaceful and walkable alleyway in the south of Tonle Bassac.

## The home you've been looking for.

*Urban Living Solutions* is excited to unveil its next exciting project in Phnom Penh: *Uchi Residences* – a high-rise condominium located in a quiet section of the southern Tonle Bassac area. *ULS* acquired the land in 2019 after Managing Director Leang Kean was inspired by the quiet laneway connecting the site from street 466, reminding him of the small alleyways populated by tiny restaurants and micro bars of Tokyo. Drawing further inspiration from Japan, he and the Creative Director proposed developing a residential building that incorporates some of the smartest features of Japanese homes that would be of benefit to Phnom Penhers.

Compared to previous *ULS* mixed-use projects such as *Urban Village* and *Bakong Village*, *Uchi* will be focusing on redefining what it feels to be home in a rapidly modernizing city. More than just a place to rest your head after a long day at work, *Uchi* combines modern residential conveniences (built-in storage, smaller bedrooms, spacious living areas) with shared amenities (community garden, a sun deck, open-air coffee shop and library) that foster community relationships, making it truly a home for living.

### BRINGING BACK THE JOY OF COMING HOME

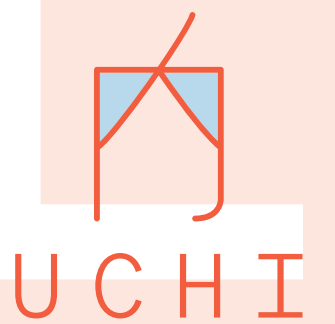
At 30 stories, *Uchi* will have a total of 133 condos designed specifically for single young professionals, small families, and retirees looking for quiet living spaces in the heart of Phnom Penh. All homes, from the 20 studios to the 4-bedroom penthouses, are fitted with a generous balcony intended to be used for enjoyment. This is a rarity in the city where balconies are generally regarded as an additional expense, suited only for larger and more expensive condominiums. With this additional space, *ULS* hopes to give residents a much-needed well-being boost by affording them an extension of the outdoors where they can garden, meditate, entertain friends, or simply enjoy a quiet moment admiring the sunrise.

During the concept development stage, the team at *ULS* decided that *Uchi* should be able to capture the joy of coming home. While located centrally in the capital (and therefore cutting back on hours wasted stuck in traffic), *Uchi* brings a slower-paced, relaxed atmosphere that makes one forget that they are living in the middle of busy Phnom Penh.

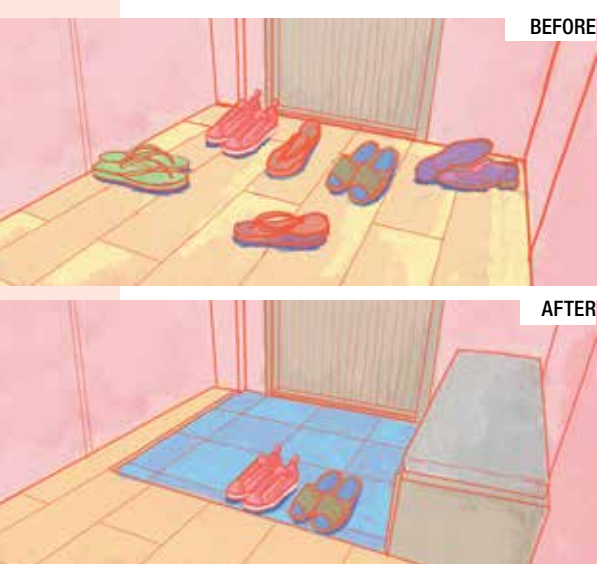
### BORROWING JAPANESE FEATURES FOR MODERN LIFESTYLES IN PHNOM PENH

Based on the industry know-how and the experiences of *ULS'* multicultural team, *ULS* and architects from *Asma Architects* borrowed some of the best design solutions of

“While located centrally in the capital, *Uchi* brings a slower-paced, relaxed atmosphere that makes one forget that they are living in the middle of busy Phnom Penh.”



PROJECT ANNOUNCEMENTS



Tidying up the Entry

All homes at *Uchi Residences* feature a genkan where one can comfortably change into house slippers and stow away shoes before entering the home.

In many countries across Asia, it is customary to take off one's shoes before entering the home as a sign of respect for private space, and avoid spreading dirt accumulated on footwear. However, this often results in a massive pile of shoes guests need to step over and dig through later to find their footwear. In addition, there is the daily awkwardness of bending over or hobbling on one foot to put on and take off shoes. With all these considered, the *ULS* team decided to incorporate a genkan by the entrance of all *Uchi* homes. Residents are given a private recessed area with ample storage for stowing away shoes and extra space for built-in seating or a stool.

The inclusion of a genkan not only keeps the home dust-free, but it is also an ideal space to practice good hygiene before coming home to your loved ones as the world begins to navigate the "new normal."



The custom of removing one's shoes before entering the home is believed to go back over one thousand years to the pre-historical era of elevated-floor structures. It has continued to the present, even after the westernization of the Japanese home, which began in the Meiji period (1868–1912).

Japanese homes to solve Cambodian residential challenges. *ULS* is pleased to introduce through *Uchi* some amenities never before seen in many of the residential developments in the kingdom.

**A MORE EFFICIENT BATHROOM LAYOUT**

*Uchi* also adopts the Japanese custom of separating the toilet and bath. Giving these two facilities their own designated spaces ensures improved privacy and better hygiene. Baths, a daily ritual in Japan, are more relaxing with toilet neatly out of sight, in their own dedicated room. This set-up can also contribute to a more harmonious shared living situation. One no longer has to begrudgingly wait for their partner to finish their business or grooming rituals; everyone can take their time using the respective facilities they need.

**BEDROOMS FOR LIVING, NOT WORKING**

Moving to the bedrooms at *Uchi*, one may notice their compact layout in relation to other condos in Phnom Penh. This was intentional. The *ULS* team believes in human-scaled architecture and its positive effects on making our daily lives more efficient and enjoyable.

Overly large bedrooms rarely promote restful sleep. In truth having too much space blurs the line between work life and personal life as we tend to fill the space with desks, computers and office chairs. *ULS* wanted to nudge people into reconsidering the bedroom purely as a place for rest, self-care, and intimacy. Downsizing a few square meters in the bedroom invites less physical and mental clutter, resulting in a cozy refuge from the stresses of modern urban life. The benefit? Extra space in the living areas and rooms designed for real human beings.

**SHARED SPACES FOR COMMUNITY-BUILDING**

Aside from well-designed homes, *ULS* also put much thought into creating community spaces throughout *Uchi*. The 7th floor was selected for the pool to allow for both pleasant views, and desired shade (there is nothing refreshing about jumping into a pool that has

**The *ULS* team believes in human-scaled architecture and its positive effects on making our daily lives more efficient and enjoyable."**

been heated to bath-like temperatures in the sun). When residents don't feel like donning a full swimsuit, they can kick off their shoes and grab a glass of wine to relax at the ashiyu – a Japanese-style footbath where residents can cool off on hot days and chit chat with neighbors.

**A ROOFTOP LIKE NO OTHER**

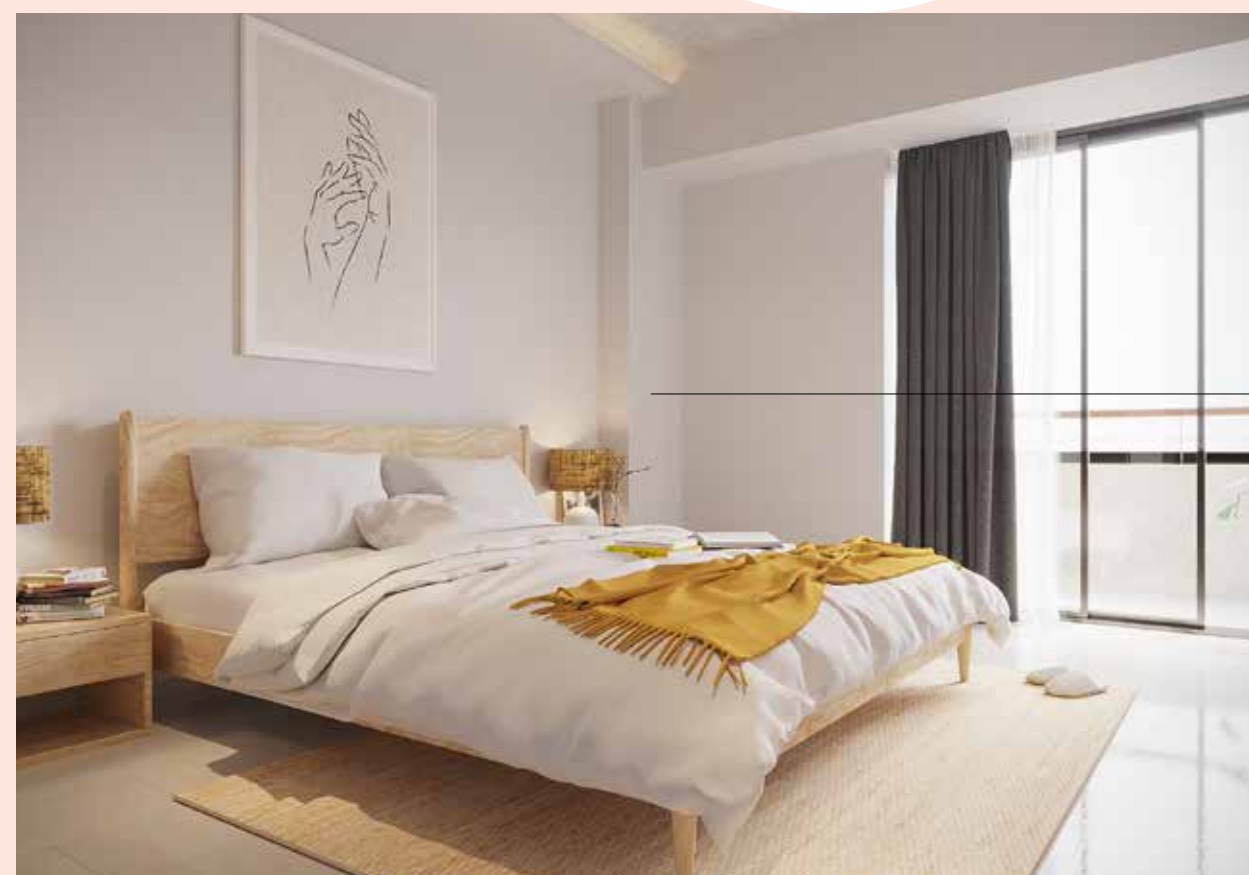
The *ULS* team looked at the city's skyline and felt there were enough rooftop bars. They asked, "what can we build to bring people together and provide a space to relax that is not dependent on drinking?" So, instead of the bar or an exclusive residence, *Uchi's* rooftop space offers something truly unique for Phnom Penh – an urban communal garden. Rather than being exclusive, *ULS* prioritized inclusivity in the space, creating a family-friendly area where neighbors can partake in gardening activities and enjoy their share of freshly picked herbs and vegetables or informal dinner parties using the outdoor kitchen and BBQ.

**NOT A LOBBY, A MEETING PLACE**

The open-air reception of *Uchi's* ground floor functions as a combination coffee shop and library, accessible to both residents and the general public. In lieu of retail spaces, *ULS* is prioritizing a free reading room and outdoor leisure steps – other community spaces lacking in the city.

**WALK, RIDE OR DRIVE**

No matter one's preferred mode of transportation, *Uchi* makes it convenient for residents to get anywhere around the city. In response to the growing scarcity of urban land and concerns over vehicle security, *Uchi* features ◉



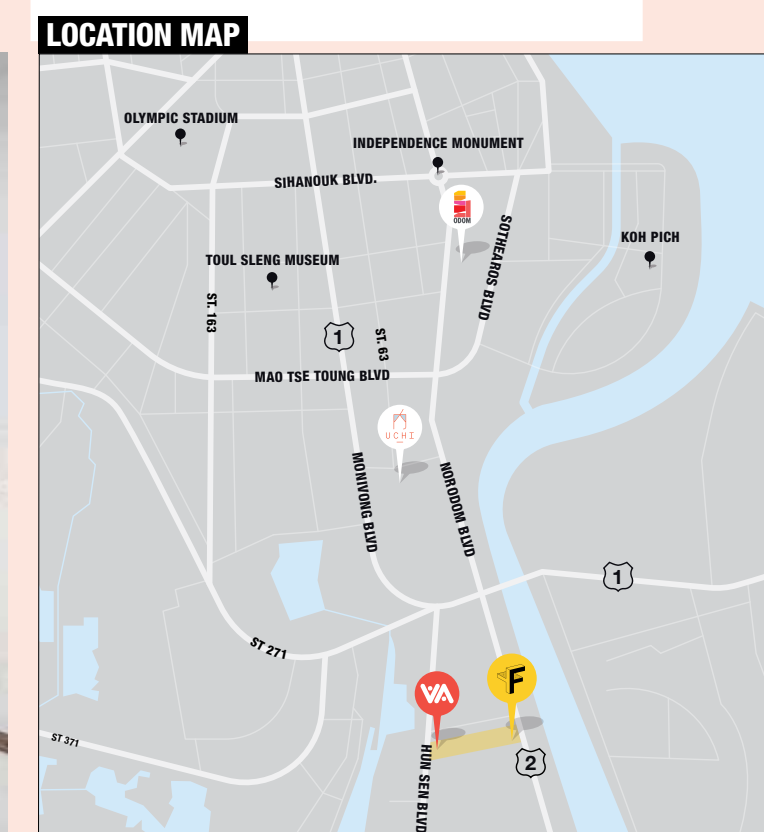
Render of the bedroom from an *Uchi* 1A-type condominium, designed to encourage complete relaxation with minimal distractions.



*Uchi's* rooftop community garden sets it apart from the bars and pools dotting the Phnom Penh's skyline. This area provides a much needed green refuge in the middle of the city and offers a unique bonding opportunity for families and neighbors.



The spacious living area inside an *Uchi* 3-bedroom condo is perfect for families who love to entertain at home.



*Uchi* offers the best of both worlds – a convenient location on the southern part of Tonle Bassac between Norodom and Monivong boulevards, but within a peaceful cul-de-sac, away from all the noise and hecticness of the city.